

Waste Segregation Details for Resorts

All segregated waste must be packed such that no waste spillage occurs during transport.
Loaded waste must further be covered in a water proof material after loading all the bags on the vessel.
All waste should be properly labeled.

1. Combustible General Waste



Paper/Cardboard



Wood Chips



Textile/Fabric waste



Packaging Material



Low grade/dirty plastic bottles/containers

All combustible mixed general waste must be packed in jumbo bags.

Waste Segregation Details for Resorts

All segregated waste must be packed such that no waste spillage occurs during transport.
Loaded waste must further be covered in a water proof material after loading all the bags on the vessel.
All waste should be properly labeled.

2. Metal-cans/tins/scraps



Cans/tins and light metal scraps must be either baled or compacted and packed in jumbo bags. Large bulky scrap metal must be stacked or bundled for easy offloading

3. Plastic



PVC & bulky high density plastics must be packed in Jumbo bags.

PET bottles, and HDPE must be either compacted or baled.

Waste Segregation Details for Resorts

All segregated waste must be packed such that no waste spillage occurs during transport.
Loaded waste must further be covered in a water proof material after loading all the bags on the vessel.
All waste should be properly labeled.

4. Glass



5. Bulky Wood/Timber



Bulky wood/timber must be cut and bundled for easy offloading.

Special Waste

6. Sanitary & Medical Waste



7. Hazardous Waste



8. e-Waste



* All waste should be properly labeled.

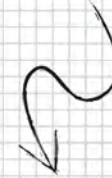
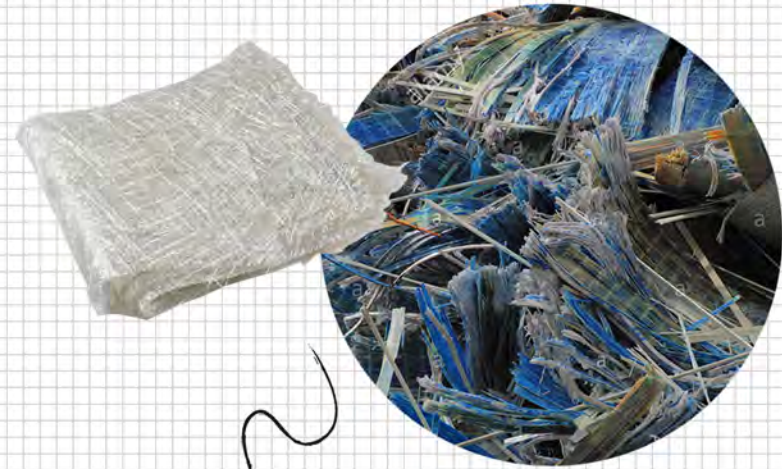
Special Waste

9. Waste oil



Sealed Drums/Containers

10. Fiber glass



Sealed Conatiner

* All waste should be properly labeled.

Types of waste that are not accepted in the regional facility



Leafy Green Waste



Sewer Waste



Food Waste



Hazardous Chemicals



Construction Waste/sand/blocks